

Velcro Type Mount Sneeze Guard Partition w/ Dual Lock

page 1 of 2

ASSEMBLY INSTRUCTIONS

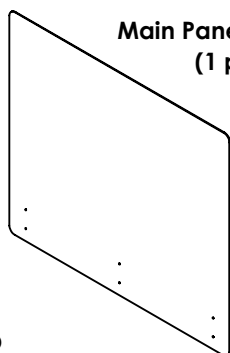
READ ALL INSTRUCTIONS BEFORE YOU BEGIN. DO NOT JUMP AHEAD OF ANY STEP.

PARTS LIST:

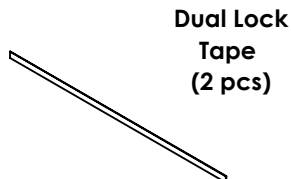
NOTE: Clean the area where the Dual Lock tape will be applied with a 50:50 mixture of isopropyl alcohol (IPA) and water for proper adhesion.

***NO TOOLS REQUIRED**

***TWO PERSON ASSEMBLY RECOMMENDED**



Main Panel Upright
(1 pc)



Dual Lock
Tape
(2 pcs)

USED TO CONNECT
MORE THAN
ONE SHEILD.

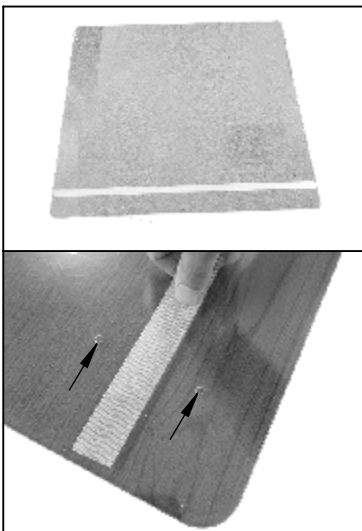


H-Connector
(1 pc)

STEP 1: Peel off the protective plastic film from both sides of Main Panel Upright.

STEP 2: Remove 3M protective film mask from one Dual Lock tape strip and apply the adhesive side to one side of the Main Panel Upright.

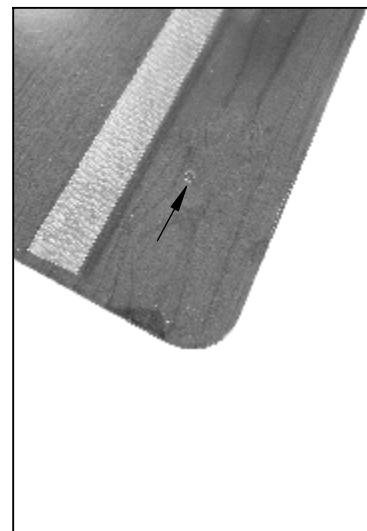
Tape line should be centered between two hole lines.



STEP 3: This step is only needed for Item # 12866.

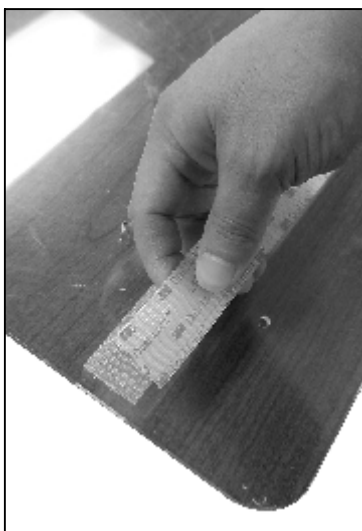
Item # 12866 contains one hole line.

Tape line should be located right above the one hole line.

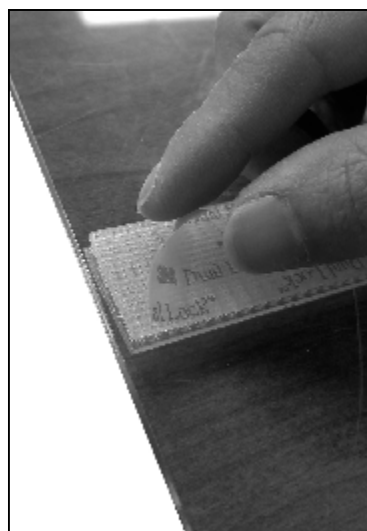


STEP 4: Attach the second Dual Lock tape strip to the Dual Lock tape strip on the Main Panel Upright.

Do not remove 3M protective film yet.



STEP 5: Remove the 3M protective film mask when the second Dual Lock tape strip is attached to the Dual Lock tape strip on the Main Panel Upright.



Velcro Type Mount Sneeze Guard Partition w/ Dual Lock

page 2 of 2

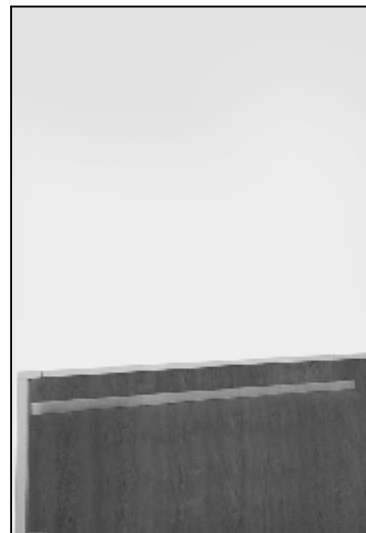
ASSEMBLY INSTRUCTIONS

READ ALL INSTRUCTIONS BEFORE YOU BEGIN. DO NOT JUMP AHEAD OF ANY STEP.

STEP 6: Place Main Panel Upright over the desired surface. Press firmly over the Main Panel Upright for 30 seconds to bond the adhesive side of the Dual Lock tape strip to the desired surface.



STEP 7: Assembly is now completed. You can remove and reattach as needed. One Dual Lock tape strip will stay on the desired surface and the other one on the Main Panel Upright.

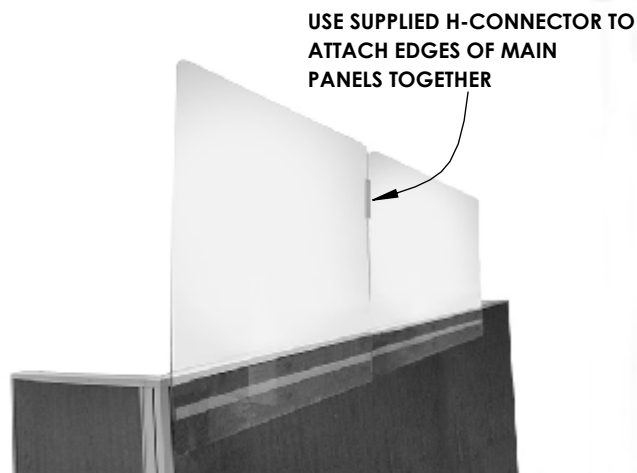


STEP 8: When reattaching make sure the Dual Lock tape strips are firmly attached to each other.

ASSEMBLY COMPLETED



SINGLE INSTALLATION



DUAL INSTALLATION

12860, 12864 & 12866